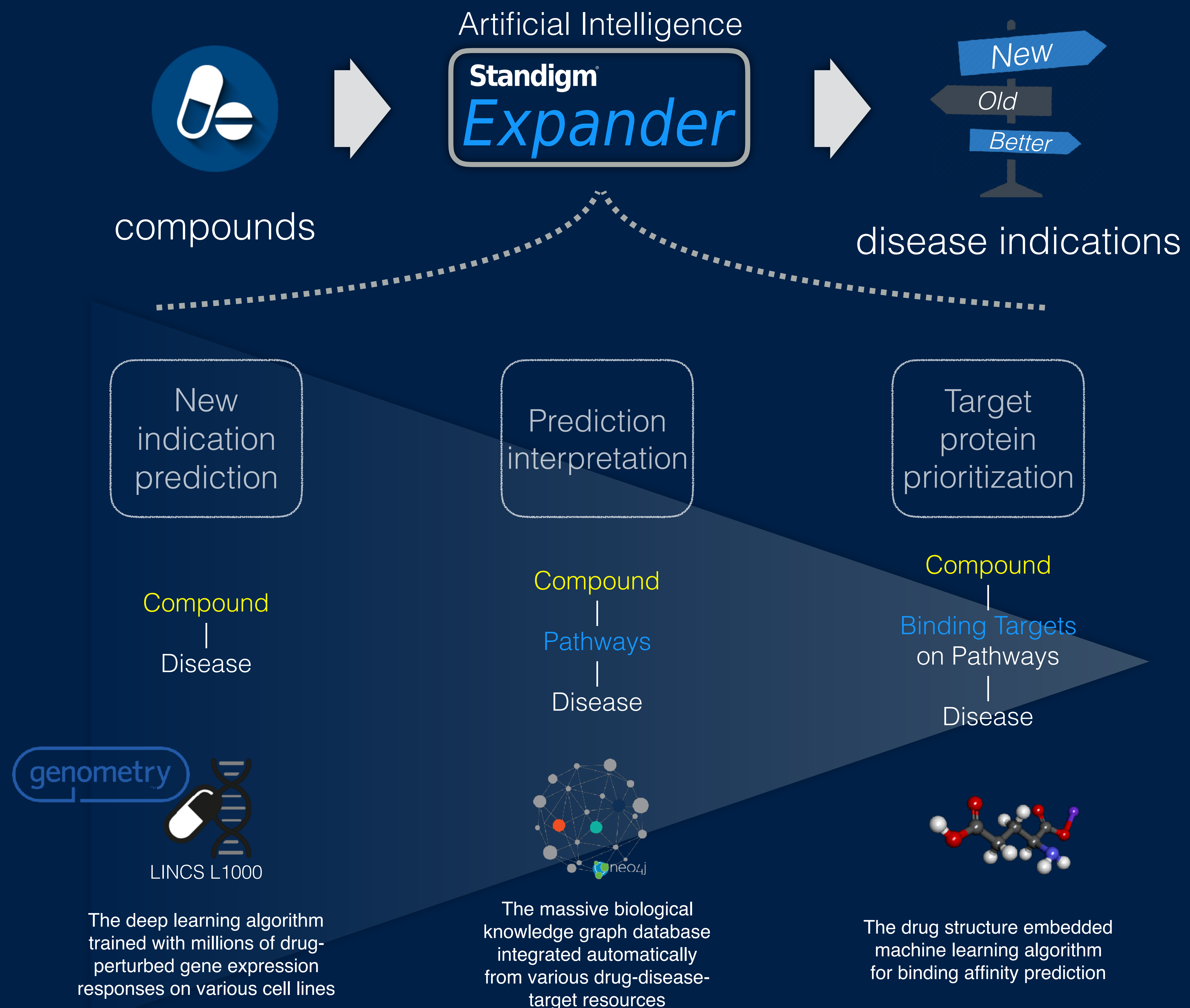


# Standigm<sup>®</sup> *Expander* 2017 Autumn

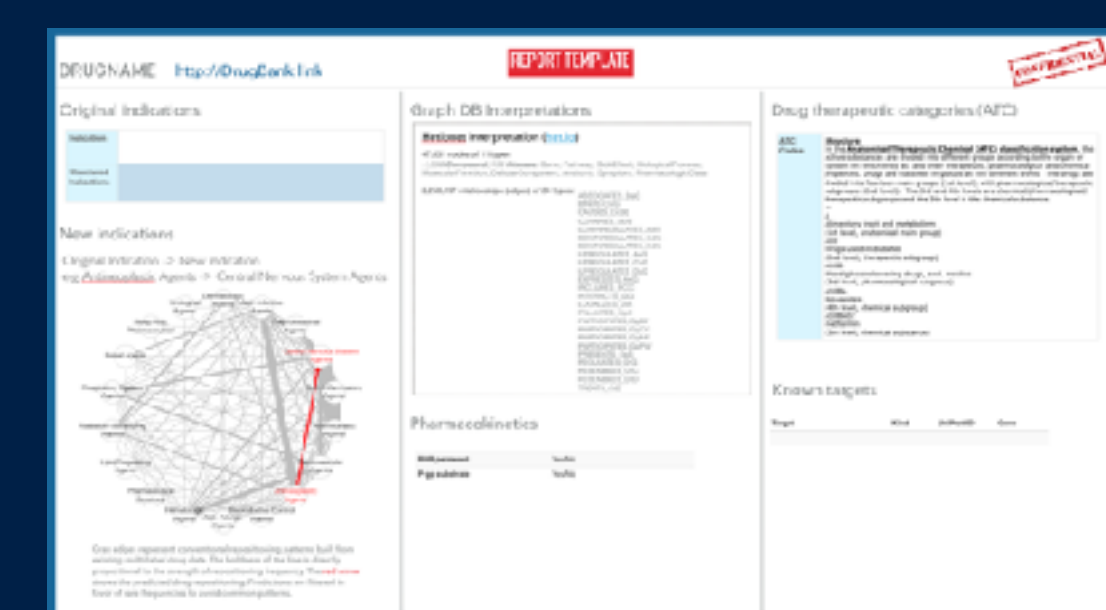
Standigm *Expander* discovers new and better indications of your in-house compounds.



## Pricing options

- Basic: \$10,000 per compound  
(L1000 profiling service fee by genometry is not included)
- Advanced: Exclusive and long term partnership  
(also target protein information)

## a sample report



## References:

- CrystalGenomics, Inc. (cancers, under lead optimization) 2 hit out of 10 compounds
- School of pharmacy Ajou university (Parkinson's disease, under validating animal model) 1 hit out of 7 compounds
- Korea institute of science and technology (autism, under validating animal model)
- A CRO for NASH (in-house, gut-liver on a chip validation finished) 1 hit out of 1 compound
- A Japanese pharmaceutical company (under making contraction)